

USER CLIENT



NORED ELECTRICITY (PTY)Ltd
P.O. Box 639, Ondangwa Namibia - Main Road Ondangwa
T: +264 65 282 2100 F: +264 65 282 2145

USER CLIENT APPROVAL



APPROVAL PERSONEL: APPROVAL DATE:/...../2019

Project **RURAL ELECTRIFICATION OF AMWAAMA
GWASHANIKA, OUMA AND ONDEIPANDA -
OMUSATI REGION**

Revisions

No.	Description	Drawing Title	Date
0	For tender	Amwama gwaShaanika Village Keymap and Single Line Diagrams	07/07/21

Electrical & Mechanical Engineers



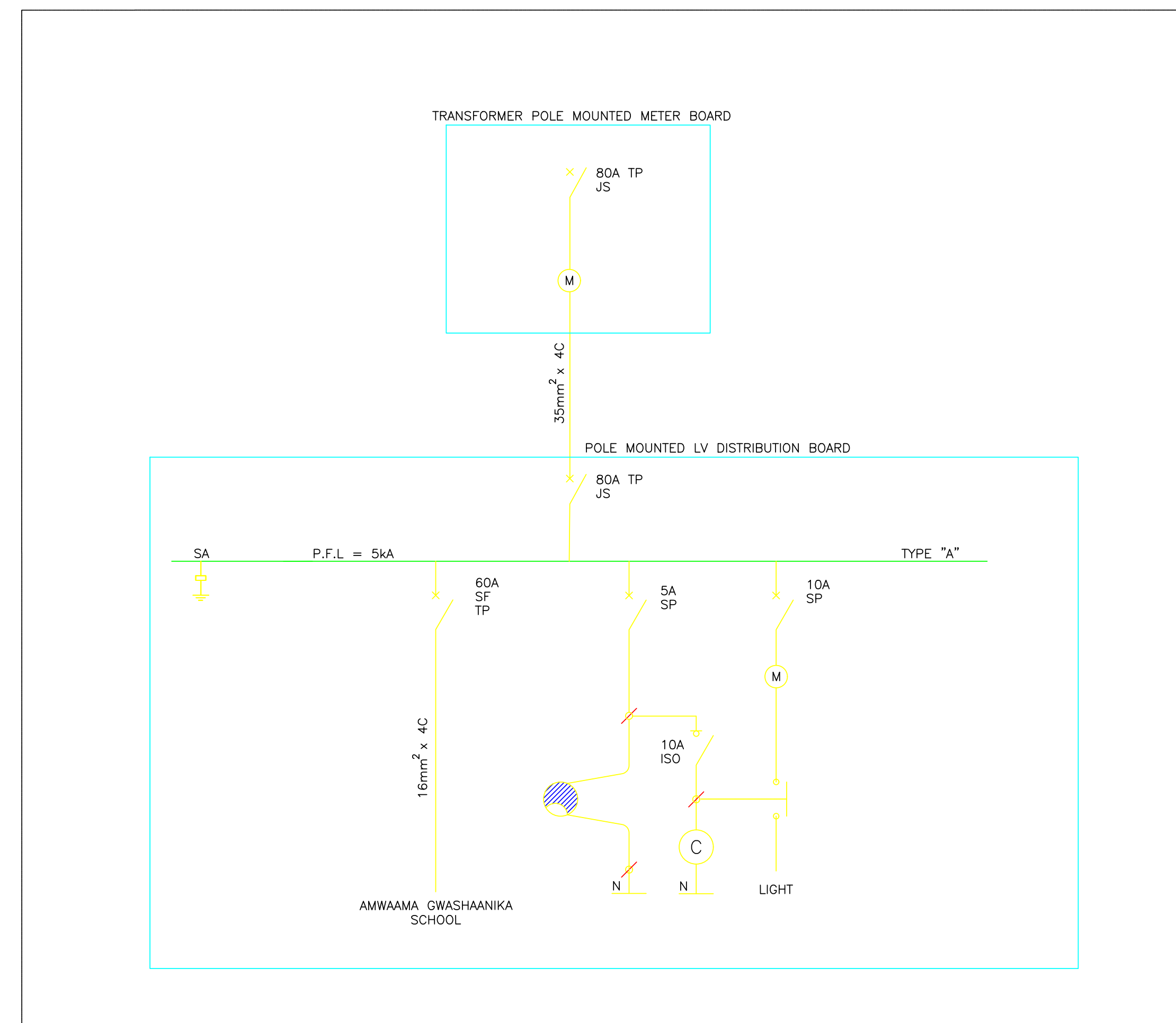
EMCON (Proprietary) Limited - Reg No. 2012/0929
P.O. Box 1900, Windhoek - 4 Bossingthwaighte Str., Klein Windhoek
t: +264 61 224 725 f: +264 88 651 6173 contact@emcengroup.com

Drawing title

AMWAAMA GWASHAANIKA VILLAGE
KEYMAP AND SINGLE LINE DIAGRAMS

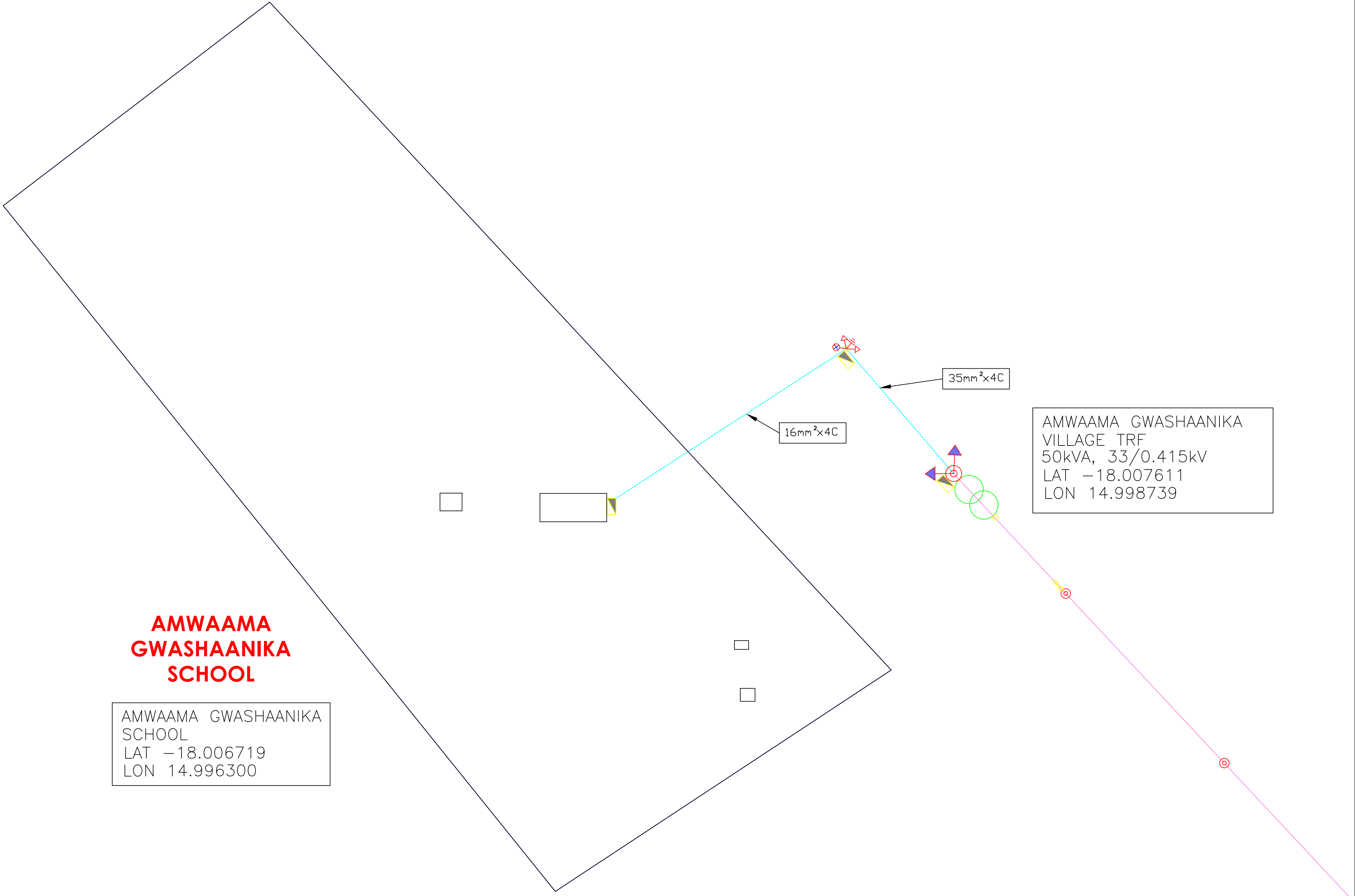
Project number: PP288	Scale N.T.S	Drawing number: NPWR 21/2021-001
	Revision 0	

Designed by: MdA Drawn by: MdA Checked by: HH



SLD

LOW VOLTAGE LAYOUT



COPYRIGHT:
COPYRIGHT © 2019 EMCON PSE CONSULTANTS
ALL RIGHTS RESERVED. NO PART OF THIS DRAWING MAY BE REPRODUCED STORED IN A RETRIEVAL SYSTEM OR TRANSMITTED IN ANY FORM OR BY ANY MEANS ELECTRONIC, ELECTROSTATIC, MAGNETIC TAPE, MECHANICAL, PHOTOCOPYING, RECORDING OR OTHERWISE, WITHOUT THE WRITTEN PERMISSION OF EMCON.

Legend:

33kV LINE	33kV LINE
22kV LINE	22kV LINE
18.1kV SWER LINE	18.1kV SWER LINE
11kV OVERHEAD LINE	11kV OVERHEAD LINE
11kV LINE UNDERGROUND	11kV LINE UNDERGROUND
400V ABC LINE	400V ABC LINE
OVERHEAD SERVICE CABLE	OVERHEAD SERVICE CABLE
UNDERGROUND SERVICE CABLE	UNDERGROUND SERVICE CABLE
TELEPHONE LINE	TELEPHONE LINE
TRANSFORMER	TRANSFORMER
LINKED FUSE (15A, TYPE K)	LINKED FUSE (15A, TYPE K)
LOAD BREAK UNIT	LOAD BREAK UNIT
STREET LIGHTS	STREET LIGHTS
LV POLE	LV POLE
MV POLE	MV POLE
KIOSK	KIOSK
FLY STAY STRUCTURE	FLY STAY STRUCTURE
STAY ASSEMBLY FOR 11kV LINE	STAY ASSEMBLY FOR 11kV LINE
STAY ASSEMBLY FOR 11kV LINE	STAY ASSEMBLY FOR 11kV LINE
STAY ASSEMBLY FOR ABC LINE WITH WARNING PIPE	STAY ASSEMBLY FOR ABC LINE WITH WARNING PIPE
STAY ASSEMBLY FOR ABC LINE	STAY ASSEMBLY FOR ABC LINE
SLEEVES	SLEEVES
8m KICK POLE FOR AIRDAC	8m KICK POLE FOR AIRDAC
5m KICK POLE FOR AIRDAC	5m KICK POLE FOR AIRDAC
KIOSK	KIOSK
DISTRIBUTION BOARD TYPE "A" OR "B"	DISTRIBUTION BOARD TYPE "A" OR "B"
POLE MOUNTED	POLE MOUNTED
BRICK HOUSE	BRICK HOUSE
SINK HOUSE	SINK HOUSE
WOOD HOUSE	WOOD HOUSE

Client

NamPower
Powering the Nation and beyond

Namibia Power Corporation (Proprietary) Limited
P.O. Box 2864, Windhoek - 15 Luther Street Windhoek
T: +264 61 202 4111 F: +264 61 202 805

USER CLIENT

NORED ELECTRICITY (PTY) Ltd
P.O. Box 639, Ondangwa Namibia - Main Road Ondangwa
T: +264 65 282 2100 F: +264 65 282 2145

USER CLIENT APPROVAL

APPROVAL PERSONNEL: APPROVAL DATE: ____/____/2019

Project **RURAL ELECTRIFICATION AMWAAMA GWASHAANIKA, OUMA AND ONDEIPANDA - OMUSATI REGION**

Revisions

No.	Description	Drawing title	Date
0	For tender	Amwaama gwaShaanka Village Low Voltage Layout	07/07/21

Electrical & Mechanical Engineers

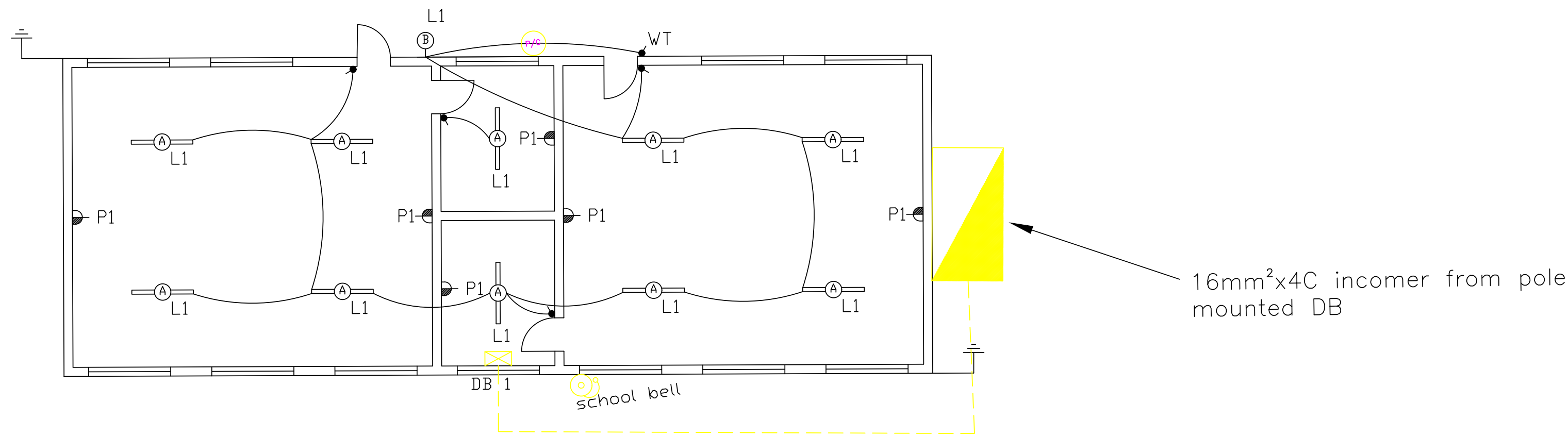
EMCON (Proprietary) Limited - Reg No. 2012/0929
P.O. Box 1700, Windhoek - 4 Basingthweginghe St. Klein Windhoek
T: +264 61 224 725 F: +264 88 651 6173 contact@emcongroup.com

Drawing title
AMWAAMA GWASHAANIKA VILLAGE LOW VOLTAGE LAYOUT

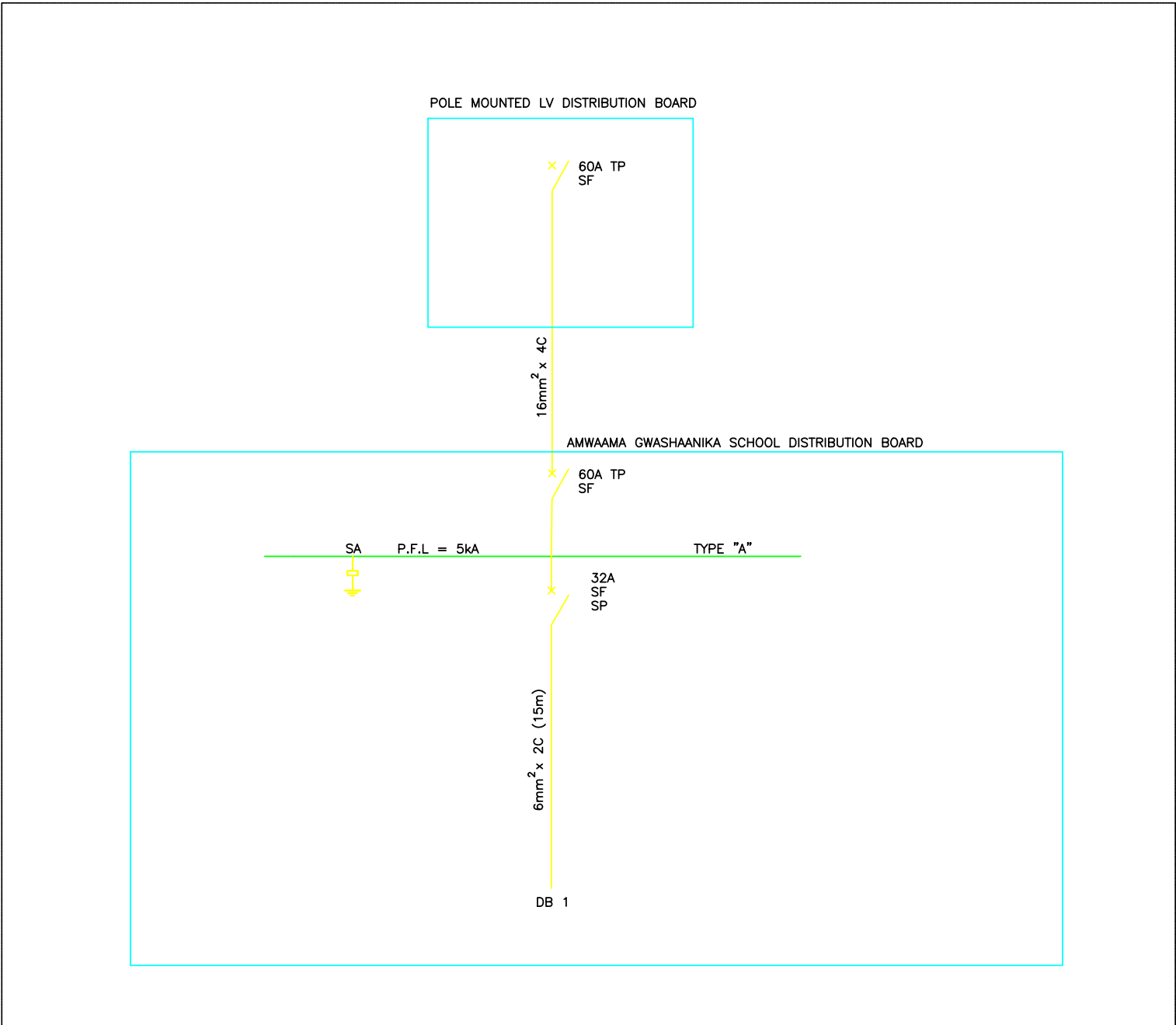
Project number:	Scale N.T.S	Drawing number:
PP288	Revision 0	NPWR 21/2021-002

Designed by: MGA Drawn by: MGA Checked by: HH

AMWAAMA
GWASHAANIKA
CLASSROOM BLOCK



CLASSROOM BLOCK WIRING

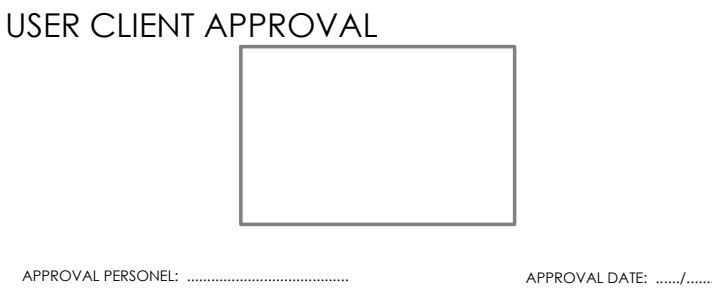
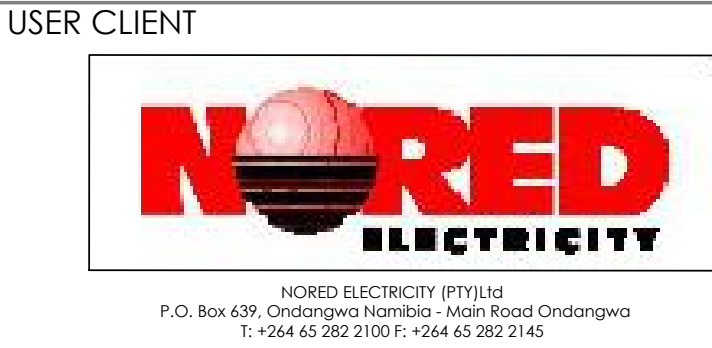
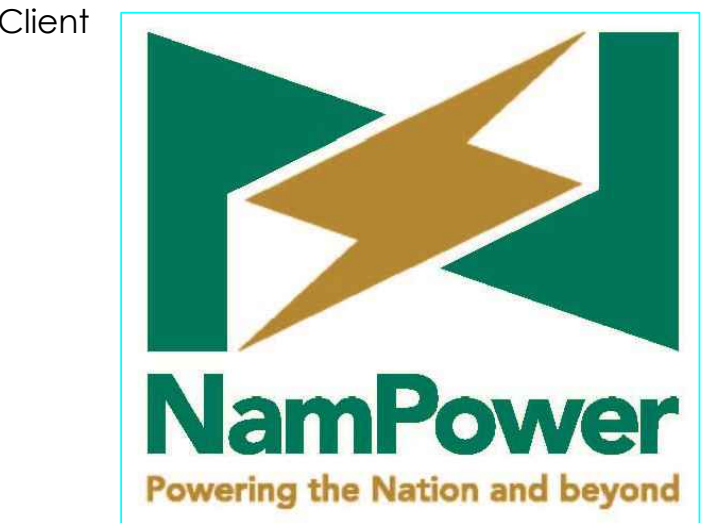


SCHOOL WIRING SLD

COPYRIGHT:
COPYRIGHT © 2019 EMCON PSE CONSULTANTS
ALL RIGHTS RESERVED. NO PART OF THIS DRAWING MAY BE REPRODUCED STORED IN A RETRIEVAL SYSTEM OR TRANSMITTED IN ANY FORM OR BY ANY MEANS ELECTRONIC, ELECTROSTATIC, MAGNETIC TAPE, MECHANICAL, PHOTOCOPYING, RECORDING OR OTHERWISE, WITHOUT THE WRITTEN PERMISSION OF EMCON.

Legend:

33kV LINE	33kV LINE
22kV LINE	22kV LINE
18.1kV SWER LINE	18.1kV SWER LINE
11kV OVERHEAD LINE	11kV OVERHEAD LINE
11kV UNDERGROUND	11kV UNDERGROUND
400V ABC LINE	400V ABC LINE
OVERHEAD SERVICE CABLE	OVERHEAD SERVICE CABLE
UNDERGROUND SERVICE CABLE	UNDERGROUND SERVICE CABLE
TELEPHONE LINE	TELEPHONE LINE
TRANSFORMER	TRANSFORMER
LINKED FUSE (15A, TYPE K)	LINKED FUSE (15A, TYPE K)
LOAD BREAK UNIT	LOAD BREAK UNIT
STREET LIGHTS	STREET LIGHTS
LV POLE	LV POLE
MV POLE	MV POLE
KIOSK	KIOSK
FLY STAY STRUCTURE	FLY STAY STRUCTURE
STAY ASSEMBLY FOR 11kV LINE	STAY ASSEMBLY FOR 11kV LINE
STAY ASSEMBLY FOR 11kV LINE WITH WARNING PIPE	STAY ASSEMBLY FOR 11kV LINE WITH WARNING PIPE
STAY ASSEMBLY FOR ABC LINE	STAY ASSEMBLY FOR ABC LINE
STAY ASSEMBLY FOR ABC LINE	STAY ASSEMBLY FOR ABC LINE
SLEEVES	SLEEVES
8m KICK POLE FOR AIRDAC	8m KICK POLE FOR AIRDAC
5m KICK POLE FOR AIRDAC	5m KICK POLE FOR AIRDAC
KIOSK	KIOSK
DISTRIBUTION BOARD TYPE "A" OR "B"	DISTRIBUTION BOARD TYPE "A" OR "B"
POLE MOUNTED	POLE MOUNTED
BRICK HOUSE	BRICK HOUSE
SINK HOUSE	SINK HOUSE
WOOD HOUSE	WOOD HOUSE



Project **RURAL ELECTRIFICATION AMWAAMA
GWASHAANIKA, OUMA AND ONDEIPANDA -
OMUSATI REGION**

Revisions

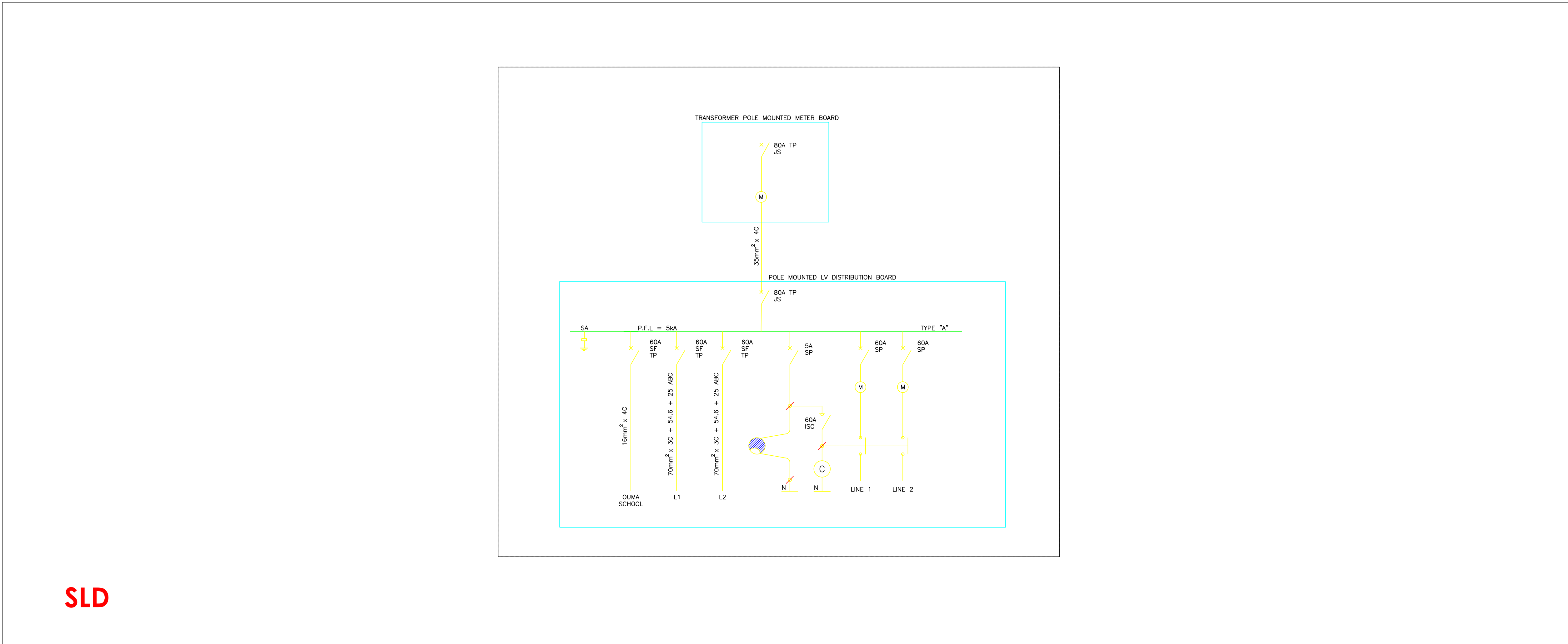
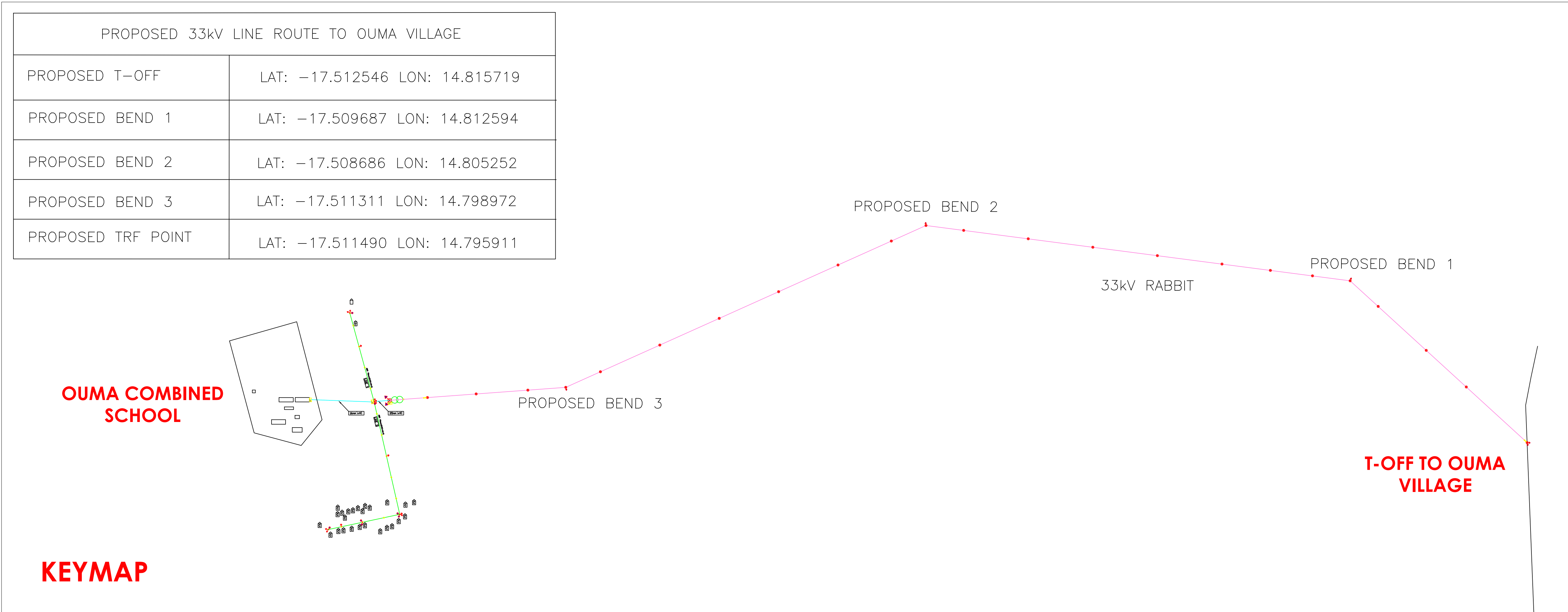
No.	Description	Drawing Title	Date
0	For tender	Amwaama gwaashaanka School Wiring	07/07/21



Drawing title
**AMWAAMA GWASHAANIKA
SCHOOL WIRING**

Project number:	Scale N.T.S	Drawing number:
PP288	Revision 0	NPWR 21/2021-003

Designed by: MGA Drawn by: MGA Checked by: HH



COPYRIGHT:

COPYRIGHT © 2019 EMCON PSE CONSULTANTS

ALL RIGHTS RESERVED. NO PART OF THIS DRAWING MAY BE REPRODUCED STORED IN A RETRIEVAL SYSTEM OR TRANSMITTED IN ANY FORM OR BY ANY MEANS ELECTRONIC, ELECTROSTATIC, MAGNETIC TAPE, MECHANICAL, PHOTOCOPYING, RECORDING OR OTHERWISE, WITHOUT THE WRITTEN PERMISSION OF EMCON.

Legend:

33kv LINE

22kv LINE

18.1kv SWER LINE

11kv OVERHEAD LINE

11kv LINE UNDERGROUND

400V ABC LINE

OVERHEAD SERVICE CABLE

UNDERGROUND SERVICE CABLE

TELEPHONE LINE

TRANSFORMER

LINKED FUSE (15A, TYPE K)

LOAD BREAK UNIT

STREET LIGHTS

LV POLE

MV POLE

KIOSK

FLY STAY STRUCTURE

STAY ASSEMBLY FOR 11kv LINE

STAY ASSEMBLY FOR 11kv LINE

STAY ASSEMBLY FOR ABC LINE WITH WARNING PIPE

STAY ASSEMBLY FOR ABC LINE

SLEEVES

8m KICK POLE FOR AIRDAC

5m KICK POLE FOR AIRDAC

KIOSK

DISTRIBUTION BOARD TYPE "A" OR "B"

POLE MOUNTED

BRICK HOUSE

SINK HOUSE

WOOD HOUSE

Client

NamPower

Powering the Nation and beyond

Namibia Power Corporation (Proprietary) Limited

P.O. Box 2864, Windhoek - 15 Luther Street Windhoek

T: +264 61 202 4111 F: +264 61 202 805

USER CLIENT

NORED

ELECTRICITY

NORED ELECTRICITY (PTY) Ltd

P.O. Box 639, Ondangwa Namibia - Main Road Ondangwa

T: +264 65 282 2100 F: +264 65 282 2145

USER CLIENT APPROVAL

APPROVAL PERSONEL: APPROVAL DATE: ____/____/2019

Project

RURAL ELECTRIFICATION AMWAAMA

GWASHAANIKA, OUMA AND ONDEIPANDA - OMUSATI REGION

Revisions

No.	Description	Drawing Title	Date
0	For tender	Ouma Village Keymap and Single Line Diagrams	07/07/21

Electrical & Mechanical Engineers

emcon

consulting group

EMCON (Proprietary) Limited - Reg No. 2012/0929

P.O. Box 1900, Windhoek - 4 Basingthorpe Drive, Klein Windhoek

T: +264 61 224 725 F: +264 88 651 6173 contact@emcongroup.com

Drawing title

OUMA VILLAGE KEYMAP AND SINGLE LINE DIAGRAMS

Project number:

Scale

N.T.S

Drawing number:

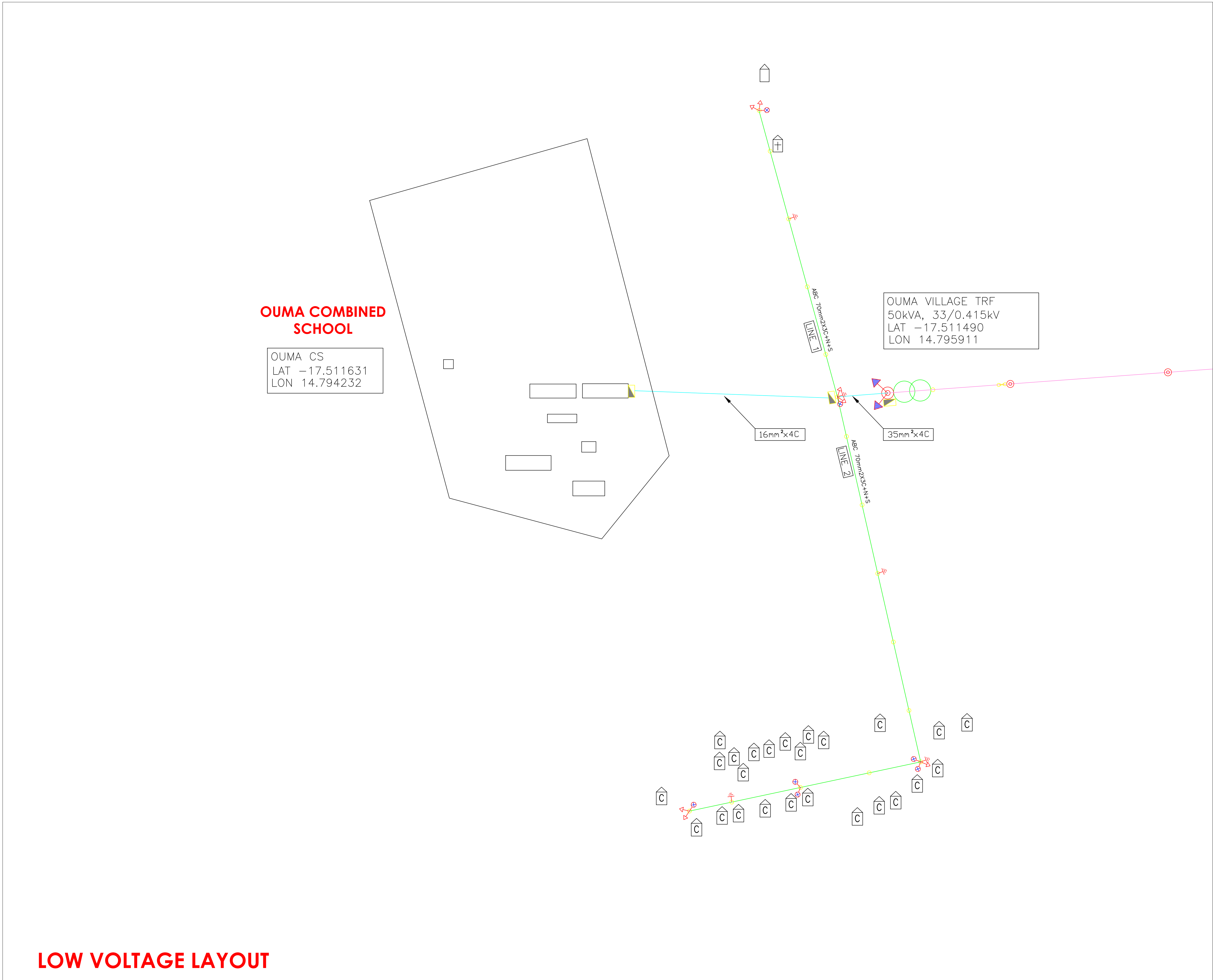
PP288

Revision

0

NPWR 21/2021-004

Designed by: MGA Drawn by: MGA Checked by: HH



COPYRIGHT:
COPYRIGHT © 2019 EMCON PSE CONSULTANTS
ALL RIGHTS RESERVED. NO PART OF THIS DRAWING MAY BE REPRODUCED STORED IN A RETRIEVAL SYSTEM OR TRANSMITTED IN ANY FORM OR BY ANY MEANS ELECTRONIC, ELECTROSTATIC, MAGNETIC TAPE, MECHANICAL, PHOTOCOPYING, RECORDING OR OTHERWISE, WITHOUT THE WRITTEN PERMISSION OF EMCON.

Legend:

33kV LINE	33kV LINE
22kV LINE	22kV LINE
18.1kV SWER LINE	18.1kV SWER LINE
11kV OVERHEAD LINE	11kV OVERHEAD LINE
11kV LINE UNDERGROUND	11kV LINE UNDERGROUND
400V ABC LINE	400V ABC LINE
OVERHEAD SERVICE CABLE	OVERHEAD SERVICE CABLE
UNDERGROUND SERVICE CABLE	UNDERGROUND SERVICE CABLE
TELEPHONE LINE	TELEPHONE LINE
TRANSFORMER	TRANSFORMER
LINKED FUSE (15A, TYPE K)	LINKED FUSE (15A, TYPE K)
LOAD BREAK UNIT	LOAD BREAK UNIT
STREET LIGHTS	STREET LIGHTS
LV POLE	LV POLE
MV POLE	MV POLE
KIOSK	KIOSK
FLY STAY STRUCTURE	FLY STAY STRUCTURE
STAY ASSEMBLY FOR 11kV LINE	STAY ASSEMBLY FOR 11kV LINE
STAY ASSEMBLY FOR 11kV LINE WITH WARNING PIPE	STAY ASSEMBLY FOR 11kV LINE WITH WARNING PIPE
STAY ASSEMBLY FOR ABC LINE	STAY ASSEMBLY FOR ABC LINE
STAY ASSEMBLY FOR ABC LINE WITH WARNING PIPE	STAY ASSEMBLY FOR ABC LINE WITH WARNING PIPE
SLEEVES	SLEEVES
8m KICK POLE FOR AIRDAC	8m KICK POLE FOR AIRDAC
5m KICK POLE FOR AIRDAC	5m KICK POLE FOR AIRDAC
KIOSK	KIOSK
DISTRIBUTION BOARD TYPE "A" OR "B"	DISTRIBUTION BOARD TYPE "A" OR "B"
POLE MOUNTED	POLE MOUNTED
BRICK HOUSE	BRICK HOUSE
SINK HOUSE	SINK HOUSE
WOOD HOUSE	WOOD HOUSE

Client

NamPower
Powering the Nation and beyond

Namibia Power Corporation (Proprietary) Limited
P.O. Box 2864, Windhoek - 15 Luther Street Windhoek
T: +264 61 202 4111 F: +264 61 202 805

USER CLIENT

NORED ELECTRICITY (PTY) Ltd
P.O. Box 639, Ondangwa Namibia - Main Road Ondangwa
T: +264 65 282 2100 F: +264 65 282 2145

USER CLIENT APPROVAL

APPROVAL PERSONNEL: APPROVAL DATE: ____/____/2019

Project
**RURAL ELECTRIFICATION AMWAAMA
GWASHAANIKA, OUMA AND ONDEIPANDA -
OMUSATI REGION**

Revisions

No.	Description	Drawing Title	Date
0	For tender	Ouma Village Low Voltage Layout	07/07/21

Electrical & Mechanical Engineers

emcon
consulting group

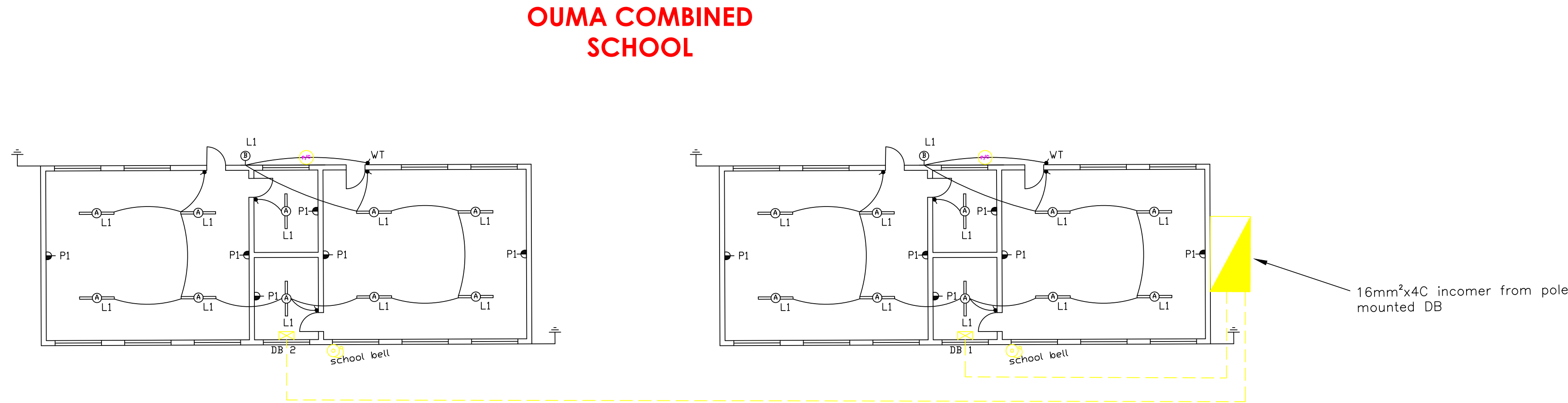
EMCON (Proprietary) Limited - Reg No. 2012/0929
P.O. Box 1900, Windhoek - 4 Basingthorpe Drive St. Klein Windhoek
T: +264 61 224 725 F: +264 88 651 6173 contact@emcongroup.com

Drawing title
**OUMA VILLAGE LOW VOLTAGE
LAYOUT**

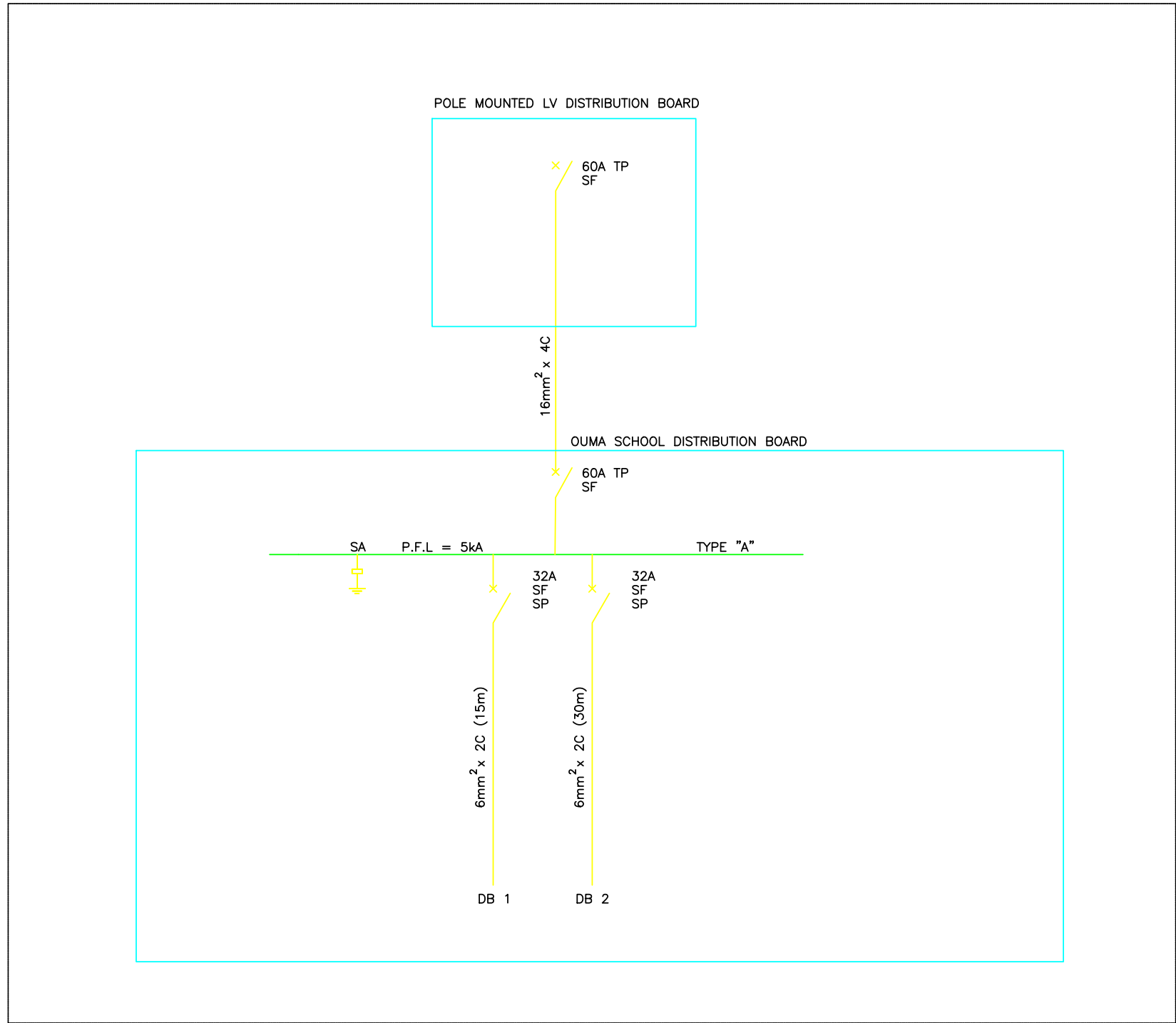
Project number:	Scale N.T.S	Drawing number:
PP288	Revision 0	NPWR 21/2021-005

Designed by: MGA Drawn by: MGA Checked by: HH

CLASSROOM BLOCK WIRING

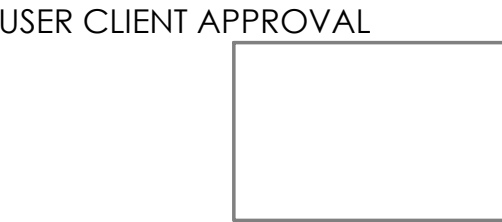
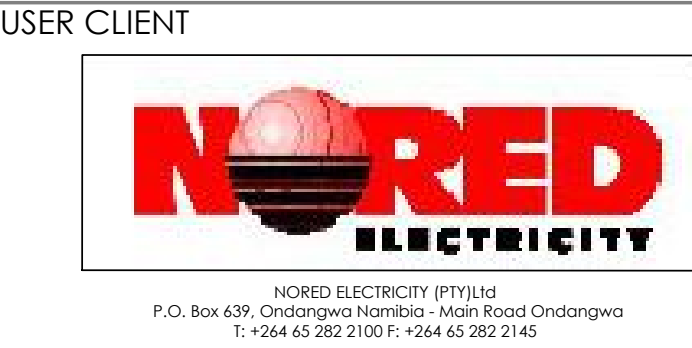
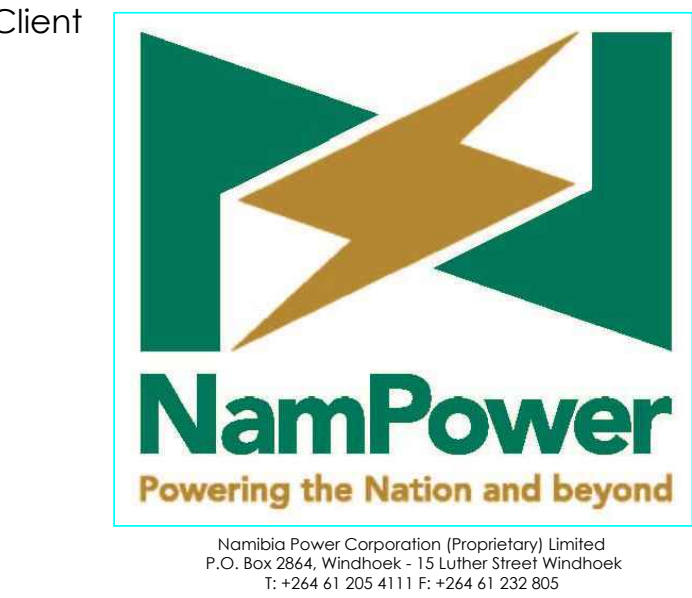


SCHOOL WIRING SLD



COPYRIGHT:
COPYRIGHT © 2019 EMCON PSE CONSULTANTS
ALL RIGHTS RESERVED. NO PART OF THIS DRAWING MAY BE REPRODUCED STORED IN A RETRIEVAL SYSTEM OR TRANSMITTED IN ANY FORM OR BY ANY MEANS ELECTRONIC, ELECTROSTATIC, MAGNETIC TAPE, MECHANICAL, PHOTOCOPYING, RECORDING OR OTHERWISE, WITHOUT THE WRITTEN PERMISSION OF EMCON.

- Legend:
- 33kV LINE
 - 22kV LINE
 - 18.1kV SWER LINE
 - 11kV OVERHEAD LINE
 - 11kV LINE UNDERGROUND
 - 400V ABC LINE
 - OVERHEAD SERVICE CABLE
 - UNDERGROUND SERVICE CABLE
 - TELEPHONE LINE
 - TELEPHONE LINE
 - TRANSFORMER
 - LINKED FUSE (15A, TYPE K)
 - LOAD BREAK UNIT
 - STREET LIGHTS
 - LV POLE
 - MV POLE
 - KIOSK
 - FLY STAY STRUCTURE
 - STAY ASSEMBLY FOR 11kV LINE
 - STAY ASSEMBLY FOR 11kV LINE WITH WARNING PIPE
 - STAY ASSEMBLY FOR ABC LINE
 - SLEEVES
 - 8m KICK POLE FOR AIRDAC
 - 5m KICK POLE FOR AIRDAC
 - KIOSK
 - DISTRIBUTION BOARD TYPE "A" OR "B"
 - POLE MOUNTED
 - BRICK HOUSE
 - SINK HOUSE
 - WOOD HOUSE

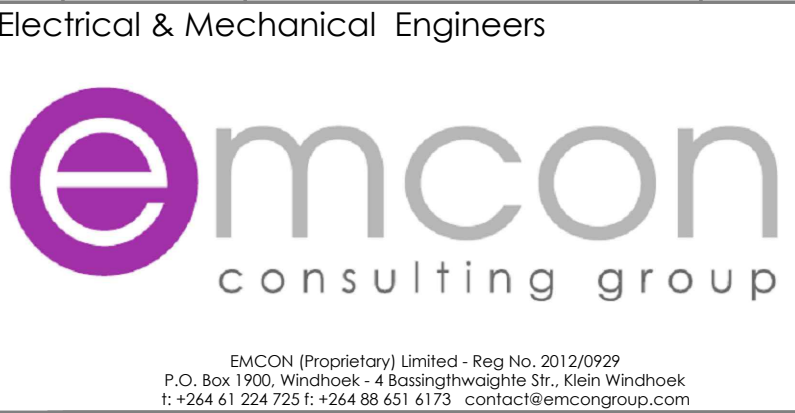


APPROVAL PERSONNEL: APPROVAL DATE: ____/____/2019

Project **RURAL ELECTRIFICATION AMWAAMA
GWASHAANIKA, OUMA AND ONDEIPANDA -
OMUSATI REGION**

Revisions

No.	Description	Drawing Title	Date
0	For tender	Ouma School Wiring	07/07/21



Drawing title
OUMA SCHOOL WIRING

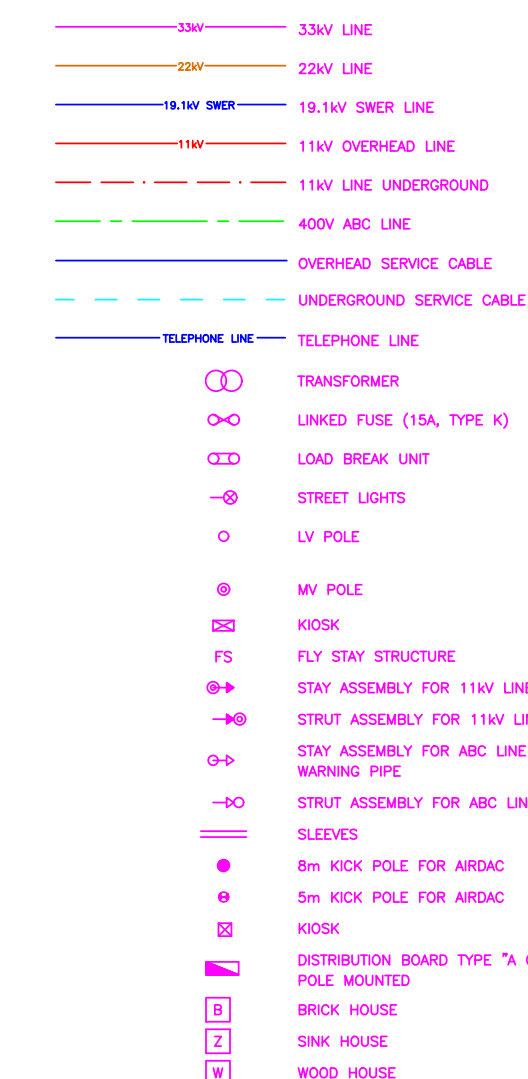
Project number:	Scale N.T.S	Drawing number:
PP288	Revision 0	NPWR 21/2021-006

Designed by: MGA Drawn by: MGA Checked by: HH

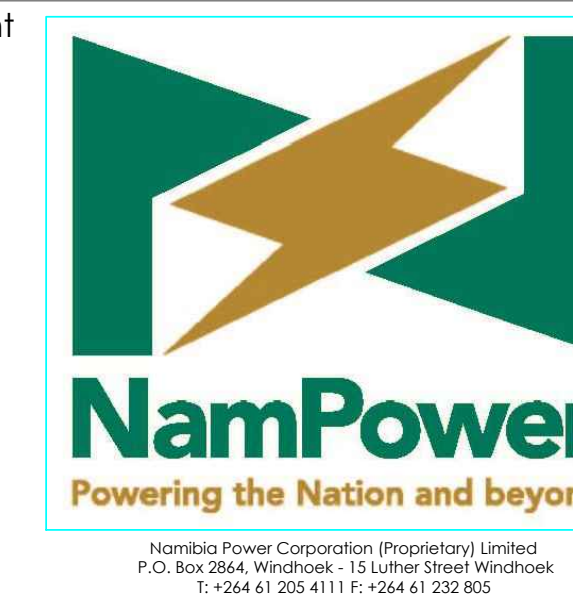


COPYRIGHT:
COPYRIGHT © 2019 EMCON PSE CONSULTANTS
ALL RIGHTS RESERVED. NO PART OF THIS DRAWING MAY
BE REPRODUCED STORED IN A RETRIEVAL SYSTEM OR
TRANSMITTED IN ANY FORM OR BY ANY MEANS ELECTRONIC,
ELECTROSTATIC, MAGNETIC TAPE, MECHANICAL, PHOTOCOPYING
RECORDING OR OTHERWISE, WITHOUT THE WRITTEN PERMISSION
OF EMCON.

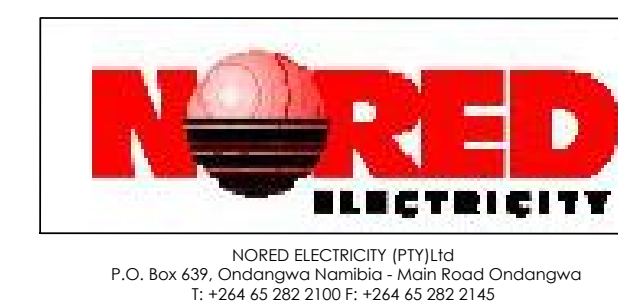
Legend:



Client	
--------	--



USER CLIENT



USER CLIENT APPROVAL



APPROVAL PERSONEL: APPROVAL DATE:/...../2015

Project **RURAL ELECTRIFICATION AMWAAMA
GWASHAANIKA, OUMA AND ONDEIPANDA -
OMUSATI REGION**

Revisions

No.	Description	Drawing Title	Date
0	For tender	Ondeipanda Village Low Voltage Layout	07/07/2

Electrical & Mechanical Engineers

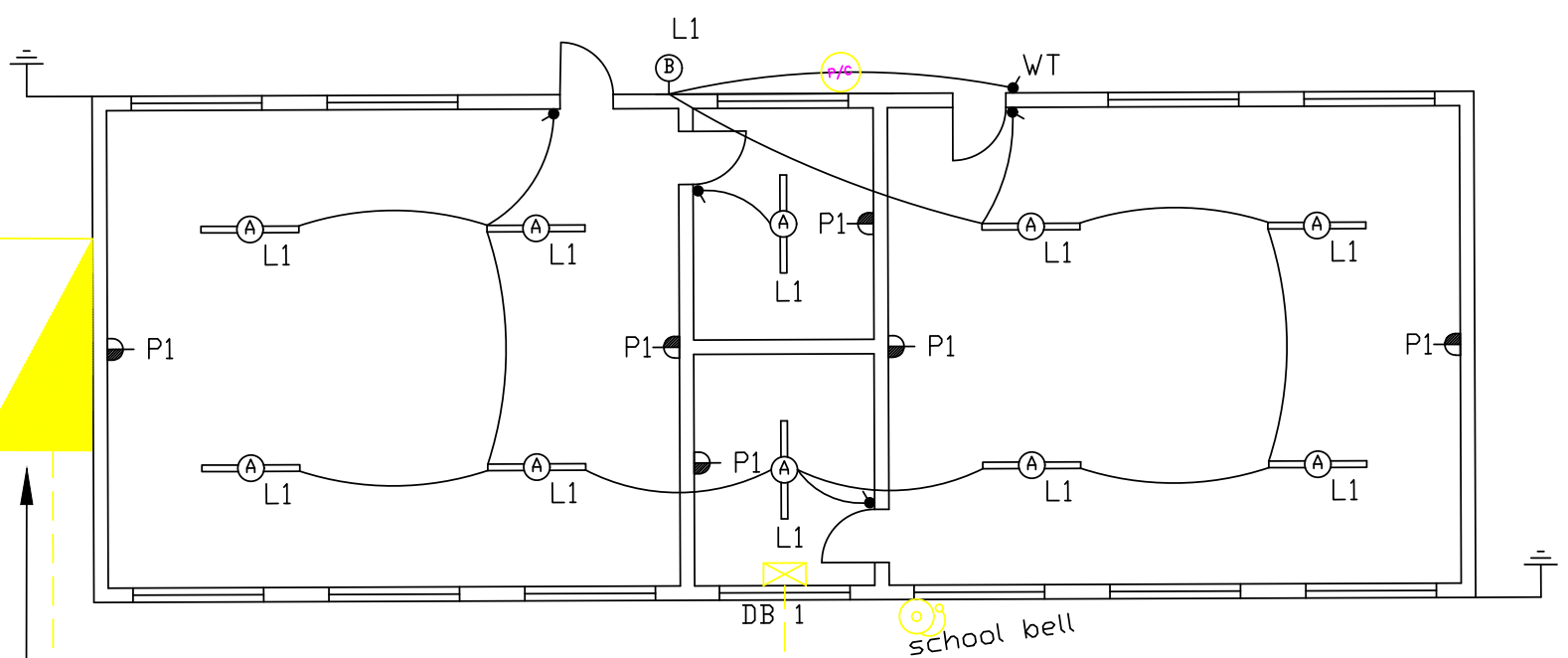
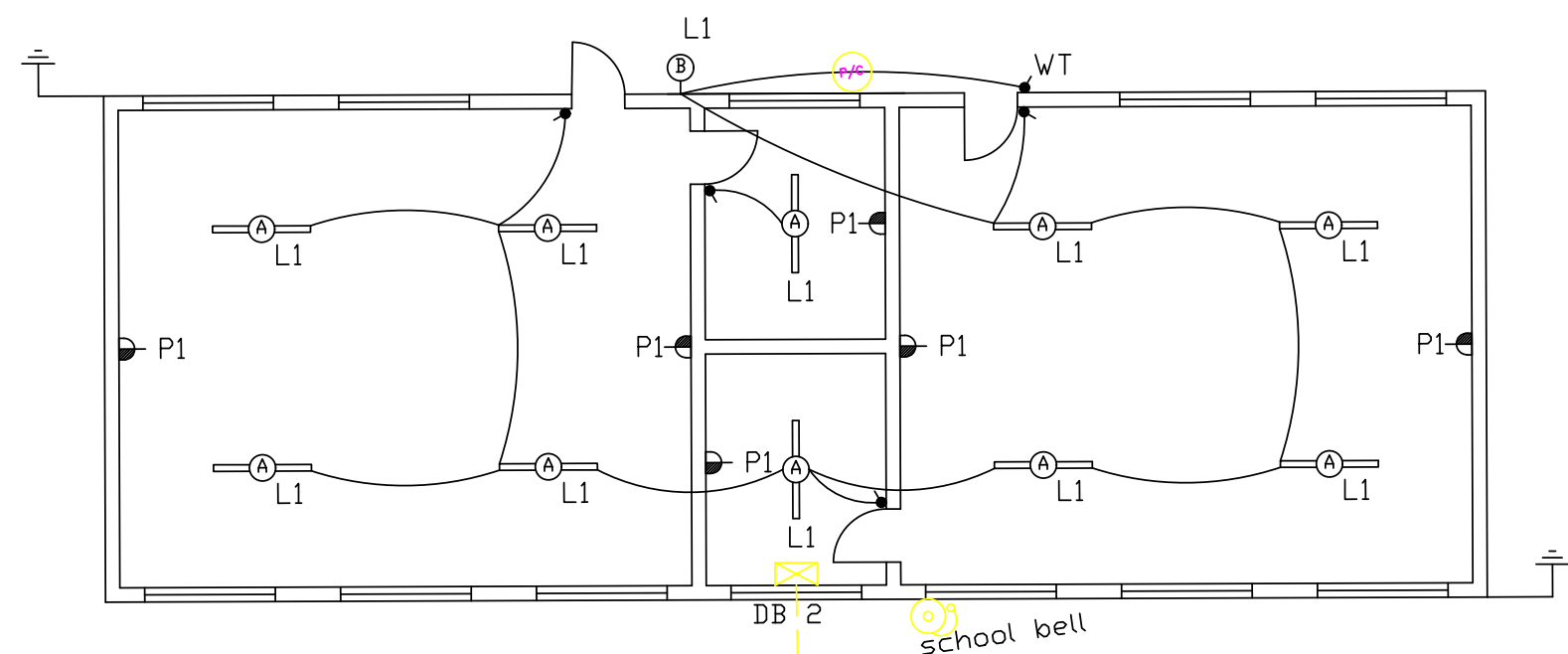


Drawing title
ONDEIPANDA VILLAGE LOW
VOLTAGE LAYOUT

Project number: PP288	Scale N.T.S	Drawing number: NPWR 21/2021-008
	Revision 0	

Designed by: MdA Drawn by: MdA Checked by: HH

ONDEIPANDA
PRIMARY SCHOOL



16mm²x4C incomer
from pole mounted
DB

CLASSROOM BLOCK WIRING

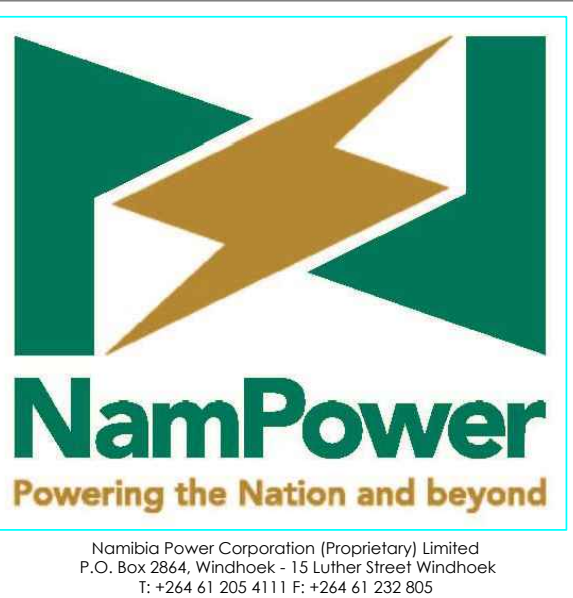
SCHOOL WIRING SLD

COPYRIGHT:
COPYRIGHT © 2019 EMCON PSE CONSULTANTS
ALL RIGHTS RESERVED. NO PART OF THIS DRAWING MAY
BE REPRODUCED STORED IN A RETRIEVAL SYSTEM OR
TRANSMITTED IN ANY FORM OR BY ANY MEANS ELECTRONIC,
ELECTROSTATIC, MAGNETIC TAPE, MECHANICAL, PHOTOCOPYING
RECORDING OR OTHERWISE, WITHOUT THE WRITTEN PERMISSION
OF EMCON.

Legend:

- 33kV LINE
- 22kV LINE
- 18.1kV SWER LINE
- 11kV OVERHEAD LINE
- 11kV LINE UNDERGROUND
- 400V ABC LINE
- OVERHEAD SERVICE CABLE
- UNDERGROUND SERVICE CABLE
- TELEPHONE LINE
- TRANSFORMER
- LINKED FUSE (15A, TYPE K)
- LOAD BREAK UNIT
- STREET LIGHTS
- LV POLE
- MV POLE
- KIOSK
- FLY STAY STRUCTURE
- STAY ASSEMBLY FOR 11kV LINE
- STAY ASSEMBLY FOR 11kV LINE WITH WARNING PIPE
- STAY ASSEMBLY FOR ABC LINE
- SLEEVES
- 8m KICK POLE FOR AIRDAC
- 5m KICK POLE FOR AIRDAC
- KIOSK
- DISTRIBUTION BOARD TYPE "A" OR "B"
- POLE MOUNTED
- BRICK HOUSE
- SKIN HOUSE
- WOOD HOUSE

Client



USER CLIENT



USER CLIENT APPROVAL



APPROVAL PERSONNEL: APPROVAL DATE: ____/____/2019

Project

**RURAL ELECTRIFICATION AMWAAMA
GWASHAANIKA, OUMA AND ONDEIPANDA -
OMUSATI REGION**

Revisions

No.	Description	Drawing Title	Date
0	For tender	Ondeipanda School Wiring	07/07/21

Electrical & Mechanical Engineers



EMCON (Proprietary) Limited - Reg No. 2012/0929
P.O. Box 1900, Windhoek - 4 Basingthwaite St., Klein Windhoek
T: +264 61 224 725 F: +264 88 651 6173 contact@emcongroup.com

Drawing title

ONDEIPANDA SCHOOL WIRING

Project number:	Scale N.T.S	Drawing number:
PP288	Revision 0	NPWR 21/2021-009

Designed by: MGA Drawn by: MGA Checked by: HH